

Knowledge Organiser

Subject: Science

Unit: Seasonal Changes

Overview:

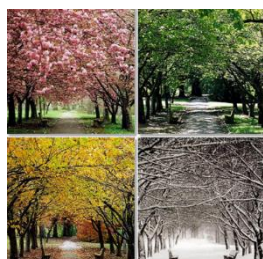
During this sequence of learning, pupils will observe the changes across the four seasons, observe and describe the weather associated with the seasons and discuss how the length of the day changes throughout the year.

What should I already know?

- The weather changes and there are different weather conditions including: sunny, rain, windy, cold, hot etc.

What will I know by the end of the unit?

- There are four seasons in the year - Autumn, Winter, Spring and Summer.
- In Autumn the weather starts to get colder and leaves fall from the trees. The Autumn months are September, October and November.
- In Winter the weather is much colder. It can be so cold that the temperature reaches freezing and we see frost or ice on the ground. It sometimes snows and many trees have no leaves on them. The Winter months are December, January and February.
- In Spring the weather starts to get warmer. Plants begin to grow and you might see baby animals around like lambs. The Spring months are March, April and May.
- In Summer the weather is hotter. There are lots of leaves on trees and many insects around like bees. The Summer months are June, July and August.
- Daylight is when it is light outside. The number of hours of daylight changes with the seasons. In Autumn and Winter, it is darker at night than Spring and Summer as there are less hours of daylight.



Vocabulary:

freezing	When the temperature reaches freezing, water turns into ice.
melting	When something changes from a solid to a liquid.
orbit	The earth makes one orbit around the sun each year.
sun	The star in the middle of the solar system. It gives off light and heat.
clouds	A white or grey mass in the sky that holds water.
wind	The movement of air.
snow	Soft, white flakes of ice that fall from the sky.
ice	Water when it is frozen.
season	One of the four parts of the year.
Spring	The season of the year when it starts to get warmer.
Summer	The hottest season of the year.
Autumn	The season of the year when it starts to get colder.
Winter	The coldest season of the year.